



Peugeot Connected 3D Navigation

Activation of connected services: Real Time Traffic and/or Speedcam

If you have a vehicle fitted with PEUGEOT Connected 3D Navigation, you can benefit from connected services including Real Time Traffic and SpeedCam.

Real Time Traffic is offered **free of charge for the first 3 years** on new vehicles.

Step 1:

Visit the PEUGEOT Services Store <https://services-store.peugeot.co.uk> and sign in, or create an account. Add your vehicles full VIN number and discover the different services available for your vehicle.

Alternatively, your Retailer can manage your subscription before delivery of a new vehicle if you sign paper T&Cs

Step 2:

For navigation, choose Real Time Traffic, Speedcam, or a bundle of both depending on what's included free with your vehicle, or what you want to pay extra for. Follow the checkout journey to complete your subscription.

Step 3:

Once subscribed online, check your in-car settings are correct to allow the sharing of data necessary for these services. Have your engine running & wait for the navigation screen to load. Ensure you are in an area with GSM network coverage (for example, avoid underground car parks, etc).

- If you have Peugeot SOS & Assistance Pack buttons, you have an embedded SIM card with data.
- If not, connected services will only run using smart phone data when tethered by Bluetooth, USB or Wi-Fi.

Depending on your vehicle the screens may vary.

Step 4:

Ensure your subscription is recognised by the vehicle by clicking the 'Messages' icon at the top of your navigation screen.



Press 'Connection Service' to see subscription status. If status is not 'Activated' press the globe icon below to refresh.

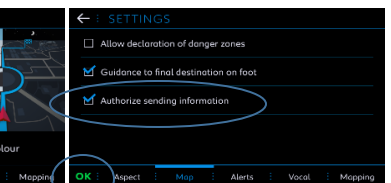
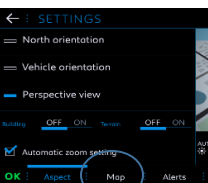
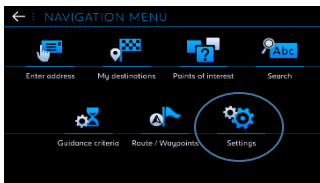
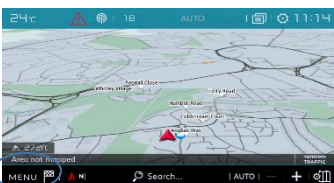
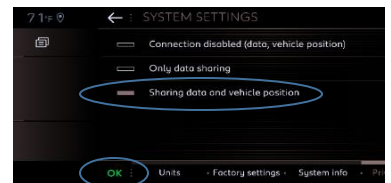
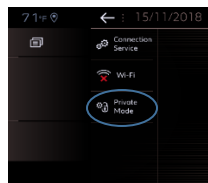
Note: subscriptions are usually active within an hour but can take up to 9 days to be received by the vehicle – driving frequently in GSM coverage areas will usually speed this up.



Step 5:

Ensure your vehicle is not in private mode, and is therefore authorise to send location data.

This is found either in 'messages', or in navigation settings.



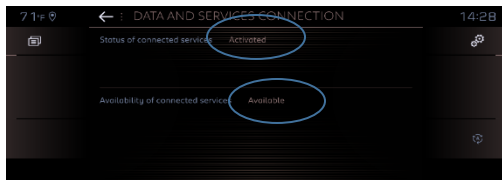
Note: Data sharing can be switched off at any time on these screens, but connected services will not be able to operate.

Step 6:

Confirm in the Connection Service screen (from step 4) that your services are now showing as both 'Activated' and 'Available'.

If so, you will also now see 'TomTom Traffic' displayed on the bottom right hand side of your navigation screen.

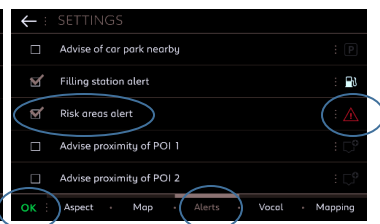
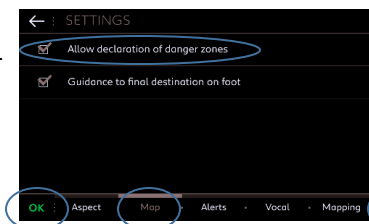
Using the icon immediately below 'TomTom Traffic', you can decide what you want to be displayed on the screen as standard.



Step 7:

If you have Speedcam included

On the navigation screen click Menu then Settings. 'Map' tab: ensure 'Allow declaration of danger zones' (Speedcam) is ticked & confirm 'OK'. 'Alerts' tab, select 'Risk areas alerts' & click on the warning triangle icon to set the alerts you want. Confirm by pressing 'OK'.



Your Connected 3D Navigation will now show real time traffic and information.

For troubleshooting guidance, or to watch our video tutorials, visit the [PEUGEOT Services Store](https://services-store.peugeot.co.uk)