



# TOMTOM

Peugeot  
Connected  
Navigation



# WHAT IS CONNECTED NAVIGATION ?



Peugeot's connected Navigation offers a wealth of services to make your life easier and your journey smoother. Real Time Traffic offers live traffic data, speedcam alerts, fuel station locations and prices or electric charging station availability, parking spaces and weather information. A subscription to these real time services is **free of charge for 3 years**, with any new Connected Navigation equipped Peugeot.

To get the most of your navigation system, we recommend you to update the maps regularly.

## 6 CONNECTED SERVICES



**TOMTOM  
TRAFFIC**

### FOR FASTER JOURNEYS

See the anticipated time to your destination, plus any delays due to traffic or weather conditions. Information is refreshed every 30 seconds and 99% of roads are covered.



**TOMTOM  
SPEED  
CAMS**

### SPEED CAMS ALWAYS ALERTS YOU

to on route Speed Cameras using an audible and visual alert.



**PARKING**

### FIND A PARKING SPACE

Don't spend hours driving round in circles. You can select a car park and check space availability and pricing.



**FUEL**

### HASSLE-FREE REFUELING

Search for service stations on the way or close to your destination and compare the fuel prices.



**SEARCH**

### SEARCH, FIND, GO

As you begin to enter your destination 'Quick Search' searches through the addresses and points of interest database in our search engine.



**WEATHER**

### DON'T LET THE WEATHER CATCH YOU OUT

Don't let the weather ruin your journey. Find out the weather at your destination.

*\*In France only the Danger Zone Alert is available, while in Germany and Switzerland the Speed Cams are not available.*

# KEY FEATURES ON YOUR CONNECTED NAVIGATION SYSTEM

ENJOY IMPROVED TOMTOM SERVICES EVERY DAY

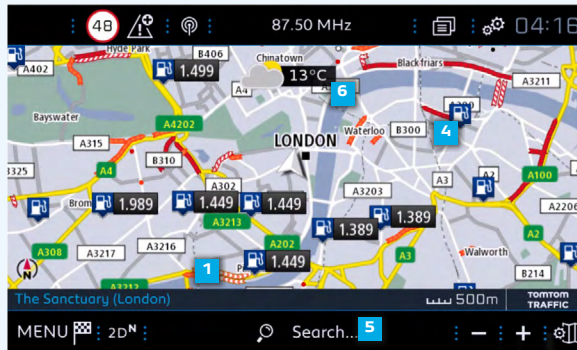
**3 YEARS** of services and connectivity INCLUDED\*

## CONNECTED NAVIGATION



**TOMTOM TRAFFIC**

**1**



**TOMTOM SPEED CAMS**

**2**



**PARKING**

**3**



**4**



**FUEL**

**5**



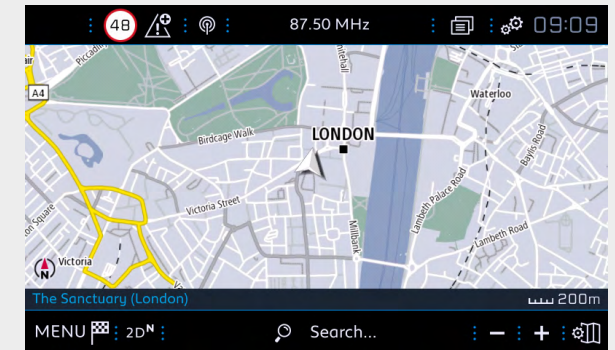
**SEARCH**

**6**



**WEATHER**

## NON CONNECTED NAVIGATION



\*If your vehicle is equipped with Peugeot Connect Box.

# HOW TO...

## ...SUBSCRIBE TO CONNECT NAV



To enjoy your Connected Services download the mobile app or connect to the Peugeot Service Store.

### STEP 1:

Download the mobile app

### STEP 2:

Create your account or log in using existing MyPEUGEOT credentials.  
(When creating a new account you will receive a validation email to activate your account).

### STEP 3:

Add your vehicle by entering VIN (Vehicle Identification Number).  
You can find your VIN on your registration document, vehicle order form or on the bottom passenger side of your windscreen

### STEP 4:

You will see all the services available for your vehicle in the Services Section of your MyPEUGEOT app. You can also check the services availability by logging into the PEUGEOT Service store  
<https://services-store.peugeot.co.uk/>

## ...CHECK IF CONNECT NAV IS ACTIVE



It is easy, if the TomTom Traffic logo is displayed at the bottom right of your screen, then your Connect Nav is active!



# MAP UPDATE INCLUDED

## WHY **UPDATING MAPS**

Name, direction, closures... Every year, approximately 15% of the European road network change.

To ensure your Peugeot Connect Nav stays up to date, you need to refresh your map.

## HOW **TO UPDATE YOUR MAPS**

[Clicking here](#)  
or scan this code to  
discover how to update  
your maps.



# CONNECTED NAVIGATION BENEFITS

Why plug in your phone when you can get all the benefits from Connected Navigation directly on your screen ?



| Features                                   | MyPEUGEOT drive   | Smartphone Navigation |
|--|-------------------|-----------------------|
| Lost connection, OFF Line Navigation       | ✓                 | -                     |
| Number of screens                          | 1 to 3            | 1                     |
| Head up display                            | ✓                 | -                     |
| No unwanted advertising                    | ✓                 | -                     |
| Data privacy                               | ✓                 | -                     |
| Quality GPS signal                         | ✓                 | -                     |
| Share destination before going on board    | ✓                 | -                     |
| Data cost                                  | Free for 3 years* | Data                  |
| User interface                             | Attractive        | Basic                 |
| No specific support for smartphone + cable | ✓                 |                       |

*\*From activation date*